



INAUGURAL MEETING OF THE CASTLE HILL WIND FARM PROJECT
COMMUNITY LIAISON GROUP

MEETING NOTES

Date: Thursday 28 November, 7pm

Location: Alfredton Community Hall, Route 52, Alfredton

Attendees:	Whom	Organisation
	Greg Carlyon	Catalyst Group, Chair
	Stephanie Murphy	Environmental Development Manager, Genesis Energy
	Bonny Lawrence	Renewable Energy Environmental Manager, Genesis Energy
	Charlotte Fletcher	Renewable Energy Environmental Coordinator, Genesis Energy
	Richard Gordon	Public Affairs Manager, Genesis Energy
	Tracey Collis	Tararua District Council
	Greg Bevin	Horizons Regional Council
	Warren Davidson	Pukaha Mount Bruce and Tararua District Council
	Ra Smith	Ngati Kahungunu ki Wairarapa
	Nancy Woodhouse	
	Peter Lindstrom	Innes Dean Tararua Law
	Adrian Mattinson	
	Bet and Hilton Dickens	
	Robert Woodhouse	
	Simon McKay	CHWF Community Action Group
	Bryan Bendall	
	David Nelson	CHWF Community Action Group
	Jamie Falloon	CHWF Community Action Group
	Euan Percy	Board of Trustees of Alfredton School
	Tom Sims	Alfredton Educational Trust
	Bruce McKenzie	CHWF Landowner
	Allen and Peter Billington	CHWF Landowner
	John and Bridget Canning	CHWF Landowner
	Martin Evans	
	Wayne Jansen and Rowan Anderson	
	Gary Dickens	
	Callum Skeet	
	Ian Woodhouse	Eketahuna School Board of Trustees
	Mike Davis	
	Ross Harvey	Pongoroa Gun Club
	Tom Dodd	Tararua District Council
	Carla Mitchell	Alfredton School PTA
	Tracey Mitchell	Alfredton School PTA
	Alex Webster	Ngati Kahungunu ki Wairarapa
	Stephanie, Carol and John Wingate	Meldrum Farming

Attendees:	Whom	Organisation
	Alan Mitchell	CHWF Landowner
	Robert Liverton	
	Emma Mitchell	
	Craig Bachelor	
Apologies:	Whom	Organisation
	Anita Philips	Alfredton School
	Stuart and Sue Cowan	
	Sue McKenzie	CHWF Landowner
	Scott and Vicky Whitehead	
	Hine Carberry	Rangitane o Tamaki Nui A Rua
	Arapera Paewai	Rangitane o Tamaki Nui A Rua
	Roly Ellis	Tararua District Council
	Lyn Paterson	Masterton District Council
	Craig Lunn	Tararua District Council
	Richard Percy	Greater Wellington Regional Council
	Dame Rimene	Rangitāne o Wairarapa
	Morry Black	Kahungunu ki Tamaki Nui a Rua
	Lisa Sims	
	June, Daniel and Pip Edmonds	CHWF Landowner
	Rachael Taylor	
	Brian and Pam Maunsell	
	Alan Emerson	Tinui ANZAC Trust
	Albert Brantley	Chief Executive, Genesis Energy
	Tim McKenzie	Genesis Energy
	Bill Wallace	Queen Elizabeth II National Trust
	Robin Potangaroa	Papauma O Wairarapa Hapu
	Jody McLachlan	Alfredton Play Group and Alfredton Community Hall

Meeting Agenda & Notes

1. Welcome

Greg Carlyon (Chair) welcomed everyone to the inaugural Castle Hill Wind Farm (“CHWF”) Community Liaison Group (“CLG”) Meeting and noted his role as an independent Chair for the meeting (in accordance with Schedule 1, condition 7 of the resource consents). Greg briefly outlined the key purposes of the meeting (in accordance with schedule 1, condition 5 of the resource consents):

1. Discuss the CHWF Project in respect to the resource consents confirmed by the Environment Court in June 2013;
2. Establish the CLG Terms of Reference; and
3. Establish the frequency of CLG Meetings going forward.

2. Karakia

Ra Smith from Kahungunu ki Tamaki Nui a Rua opened the meeting with a karakia.

3. Introductions

Greg introduced the Genesis Energy team and they all highlighted their roles in the CHWF Project to date and going forward. Refer attendee list.

4. Apologies

Greg outlined the apologies received. Refer apology list.

5. CHWF Project update presentation

Stephanie Murphy acknowledged the welcoming nature of the community and those community members who have worked tirelessly on the project to date. Stephanie Murphy then presented an update on the Caste Hill Wind Farm project. It is noted the key messages are a summary taken from the CHWF Newsletter 6 that was sent out around the CHWF Community in September 2013, and is also available on Genesis Energy website – see link below.

[Castle Hill Wind Farm](#)

<https://www.genesisenergy.co.nz/generation/our-projects/castle-hill>

Refer to attached presentation.

The following questions and answers were raised as a result of the presentation given by Stephanie Murphy:

Q) In regards to the mention that Genesis Energy is not planning to begin construction of the CHWF Project in the foreseeable future, can you please put 'no immediate plan' into context?

A) The resource consents have a 10 year lapse clause and Genesis Energy will not begin construction until it is economic to do so. Genesis Energy is constantly monitoring the market to predict where the market is heading. It is realistic to say that construction will not begin for at least 5 – 8 years.

Q) Who should the community contact at Genesis Energy from now on when they have questions regarding the CHWF Project?

A) Stephanie Murphy will continue to be the key point of contact until the end 2013. From that point on, Bonny Lawrence will be the key point of contact. Bonny's contact details are:

Telephone: 06 384 7246

Email: Bonny.Lawrence@genesisenergy.co.nz

Q) How does the wind that is monitored equate to in terms of production?

A) This depends on the type and size of the turbines installed.

Ian Woodhouse, the Chairman of the Eketahuna School Board of Trustees noted he felt let-down by the consenting process when the key transport route was changed to pass through Eketahuna.

Q) How will the Eketahuna community be included in the CTMP to ensure the safety of the students and community of Eketahuna?

A) This is covered under the resource consent requirements related to the CTMP. The Eketahuna community will be consulted with during the development of the CTMP in accordance with the Masterton and Tararua District Council Land Use consents condition 57. Stephanie Murphy gave a commitment that Genesis Energy will confirm this in writing to Eketahuna School.

Q) What will the lapse clause extension of the Meridian Wind Farm site near Taihape mean for the community there?

A) The local Councils will make a decision on that application. This application has no bearing on the CHWF Project.

Q) Can you please confirm what the construction times will be?

A) No construction traffic will be allowed to travel on the roads listed in condition 58 (b) outside of the hours of 7am to 7pm. There are exceptions to this condition (condition 58 (c)) for "planned concrete pour" or a "critical construction event". Again these are defined and as part of the CTMP which also includes a public notification process.

Q) Will details of traffic safety be discussed with the community prior to construction?

A) Yes, Genesis Energy is required to prepare the CTMP prior to construction commencing (in accordance with conditions 37 and 49). Discussions will start with the community well in advance via the CLG meetings (condition 57).

Q) What upgrade works are proposed around Alfredton School?

A) A Traffic Safety Master Plan has been developed with the Board of Trustees of Alfredton School. This plan provides for upgrading intersection Route 52 by the one name bridge; relocation and upgrading of bus drop off area and car parking area; new car parking facilities on Route 52 outside Alfredton School main entrance; and also walkway between Alfredton Community Hall and Alfredton School amongst other things.

Q) Has the Cook Strait Link improved transmission from the South to North Island?

A) Yes it has improved. There are still transmission losses, but it is more efficient now.

Q) If Tiwai Point closes then 15% more electricity may come onto the market – will this affect Genesis Energy?

A) Yes, however this will affect electricity generators – not just Genesis Energy.

Q) Please explain "commencement of construction".

A) This also includes any necessary construction related to the CHWF Project such as upgrades of roads for the purposes of construction of the CHWF Project. This will need to happen before CHWF Project construction can commence.

Q) Will the road upgrade go beyond Castle Hill?

A) Yes – however, how far will depend on which clusters of the CHWF Project area being constructed at the time. The details of this will be reviewed prior to construction.

6. Community Liaison Group

It was proposed by Genesis Energy that the development of the CHWF CLG Terms of Reference ("TOR") be delayed until the decision is made to proceed with construction of the CHWF Project.

The quorum agreed with this suggestion.

It was also proposed by Genesis Energy that the frequency of meetings be reviewed. Currently the next CLG Meeting is required annually (in accordance with Schedule 1, condition 7 of the resource consents). It was proposed by Genesis Energy that the next meeting be held in the first quarter of 2015. This will likely follow Genesis Energy's Initial Public Offering (IPO), another central government election, and will provide for another 12 months of electricity supply and demand data to be reviewed.

The quorum agreed with this proposal, unless the current situation changes significantly for Genesis Energy regarding the CHWF Project prior to this date.

Q) How often will Genesis Energy continue communicating with the community through newsletters? It was noted by several attending that they find the newsletters useful.

A) Genesis Energy will continue to communicate with the community through newsletters at least annually. Newsletter 6 was sent out in September 2013. Genesis Energy will aim for similar timing in 2014.

7. Any other business

No other matters were raised by those in attendance.

8. Agreement on actions / outcomes and close of meeting

Greg Carlyon noted the following actions as a result of the meeting:

1. Genesis Energy to send a letter to the Eketahuna School Board of Trustees to confirm that they will be involved in the development of the CTMP.
2. Genesis Energy will arrange for the next CLG Meeting to take place in the first quarter of 2015 unless the situation changes before then.
3. Genesis Energy will continue with producing CHWF Project Newsletters at least annually, with Newsletter 7 due in September – October 2014.
4. Genesis Energy to distribute the meeting minutes in accordance with Schedule 1, condition 10.

Greg Carlyon thanked everyone for their attendance and closed the meeting. Greg Carlyon extended an invitation to all those attending to join the Genesis Energy team for supper. Stephanie Murphy also noted special thanks to the Alfredton School PTA for providing this.

Meeting closed at 8:25pm.

APPENDIX: PRESENTATION GIVEN ON 28 NOVEMBER 2013

Castle Hill Wind Farm Project Update

Castle Hill Wind Farm
Community Liaison Group Meeting
28 November 2013

Stephanie Murphy
Environmental Development Manager

1. Welcome – Greg Carlyon
2. Karakia – Ra Smith, Ngati Kahungunu ki Wairarapa
3. Introductions – Grey Carlyon
4. Apologies – Greg Carlyon
5. CHWF Project Update – Stephanie Murphy
6. CHWF Community Liaison Group terms of reference – Greg Carlyon
7. Any other business
8. Agreement on actions / outcomes & close of meeting – Greg Carlyon
9. Supper – provided by Alfredton School PTA

Key Milestones

RMA Approvals for the Castle Hill Wind Farm Project were confirmed by the Environment Court in July 2013

- Decision from Commissioners received in mid-June 2012
- Decision appealed by Genesis Energy, Castle Hill Wind Farm Community Action Group (“CHWFCAG”) and jointly by Alfredton Educational Trust (“AET”) and Board of Trustees of Alfredton School (“BOTAS”) in July 2012
- Several other parties joined the process
- Mediation attended by all parties in November 2013
- Ultimately two agreements reached and consents confirmed by Environment Court in July 2013

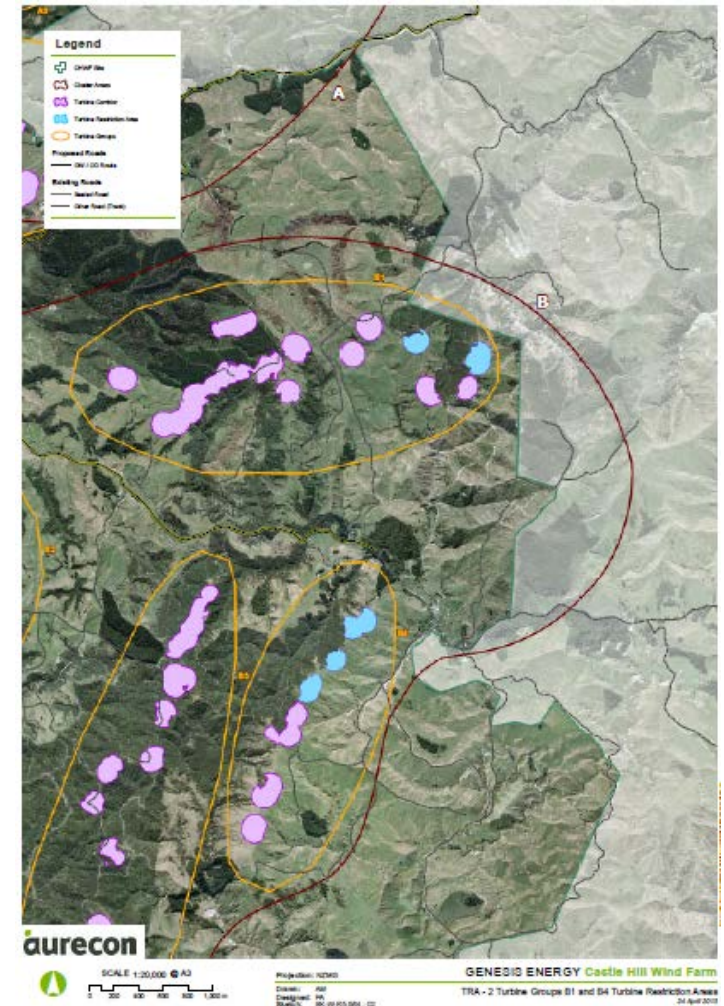
Key Changes

- Construction traffic
 - New “main route” SH 2 and Alfredton Road
 - Significant upgrading to local roads
 - Restricted to 7am to 7pm Mondays to Saturdays
 - Independent commercial farm advisor
 - Noise mitigation for residential dwellings within 20m of road used by construction traffic
 - School buses to have sole use of unsealed roads during school bus runs unless otherwise agreed



Key Changes

- Landscaping and amenities
- Turbine corridor and parameters
 - Turbine restriction areas (“TRA’s”)
 - Maximum turbine 155m tip height with maximum number of turbines 286, subject to TRA
- Establish Community Liaison Group
- CHWF Community Committee and Fund



Key Activities

- CHWF Community Committee and Fund
 - Committee comprises Simon McKay (Chair), David Nelson, Jamie Falloon, Stephanie Murphy and Jenny Burke
 - Initial funding round held in September
 - Funding awarded to eight projects and nine tertiary scholarships
 - Half funding held over from this round until 2014 for tertiary scholarships only
 - New committee will be elected prior to construction commencing

Castle Hill Wind Farm: Newsletter 6 - September 2013



Our Generation Slices Around the Country

total generating capacity of assets
2000 MW
20% supply capacity to NZ

Huntly Power Station | Tongariro Hydro Scheme | Walkaremoana Hydro Scheme | Hau Nui Wind Farm | Tekapo Hydro Scheme

CHWF Community Committee & Fund

The CHWF Community Fund has been established to provide community investment in the communities associated with the CHWF. Until construction commences the initial Community Committee comprises David Nelson, Simon McKay, Jamie Falloon and two Genesis Energy staff - Stephanie Murphy and Jenny Burke. This Committee will oversee the initial funding round and six months before construction commences a new committee will be elected via a formal election process. The Committee will then consist of two Genesis Energy appointed staff members, one appointed CHWFAG member and two members elected by the CHWF community. The CHWFAG will run its own separate election process to appoint their committee member.

INITIAL FUNDING ROUND

The Committee is now accepting applications for funding of community projects and tertiary educational courses. The Committee will consider projects that deliver community enrichment, education or environment enhancement within the community. Tertiary scholarship funding is also available to individuals within the community who wish to further their tertiary studies.

Further information outlining the application process, criteria and timing for both Community Projects and Tertiary Scholarships is available on the Genesis Energy website www.genesisenergy.co.nz along with application forms.

Please feel free to call or email Jenny Burke on (09) 951 9283 / jenny.burke@genesisenergy.co.nz

Applications close Friday 4 October 2013

TALK TO US...

Main point of contact

Please feel free to give us a call or drop us an email if you have any questions or would like any more information on the project.

Stephanie Murphy
Genesis Energy
FREEPOST 232530
PO Box 17188
Greenlane
Auckland 1546

09 580 2094
castle.hill@genesisenergy.co.nz
genesisenergy.co.nz

Splendordigital is made from virgin pulp that is derived from well-managed forests. It is elemental chlorine free bleached and is manufactured by an ISO 14001 certified mill.
www.genesisenergy.co.nz

Key Activities

Castle Hill Wind Farm Newsletter 6 – September 2013



CASTLE HILL WIND FARM NEWSLETTER 6

Welcome to the sixth Genesis Energy Castle Hill Wind Farm newsletter in which we outline the key changes to the resource consent conditions agreed by the Environment Court.



THE CASTLE HILL WIND FARM PROJECT

Genesis Energy is proposing to establish and operate the Castle Hill Wind Farm in northern Waikato. The proposed Castle Hill Wind Farm involves up to 250 wind turbines with a potential nominal capacity of up to 850MW of renewable electricity generation.



Resource consent applications for the Castle Hill Wind Farm

In 2011, Genesis Energy lodged resource consent applications for the Castle Hill Wind Farm ("CHWF") with Taranaki and Hauraki Districts' and Hutt and Greater Wellington Regional Councils as required under the Resource Management Act 1991. Following submissions being received in September 2011, two days of hearings were held during November 2011 and January 2012. The application was heard by three independently appointed commissioners representing the four Councils. Following the release of their preliminary decision in April 2012, the Commissioners closed the hearing in mid May 2012.

Environment Court process

The final resource consent decision was released by the Commissioners in mid-June 2012. That decision granted all resource consents sought by Genesis Energy for the CHWF, subject to certain exceptions and conditions. Genesis Energy, Castle Hill Wind Farm Community Action Group ("CHWF-CAG"), and jointly Affiliated Education Trust ("AET") and Board of Trustees of Afton School ("BOTAS") appealed the Commissioners' decision to the Environment Court. Several submitters joined the process and became a party to the proceedings. During the period July 2012 to May 2013 all the parties worked collaboratively together to understand their respective issues with the Commissioners' decision and developed solutions to those issues. In early November 2012 Environment Court assisted mediation was held in Havelock, with the majority of parties attending. This again refined the issues and provided the parties with clear parameters for on-going discussions.

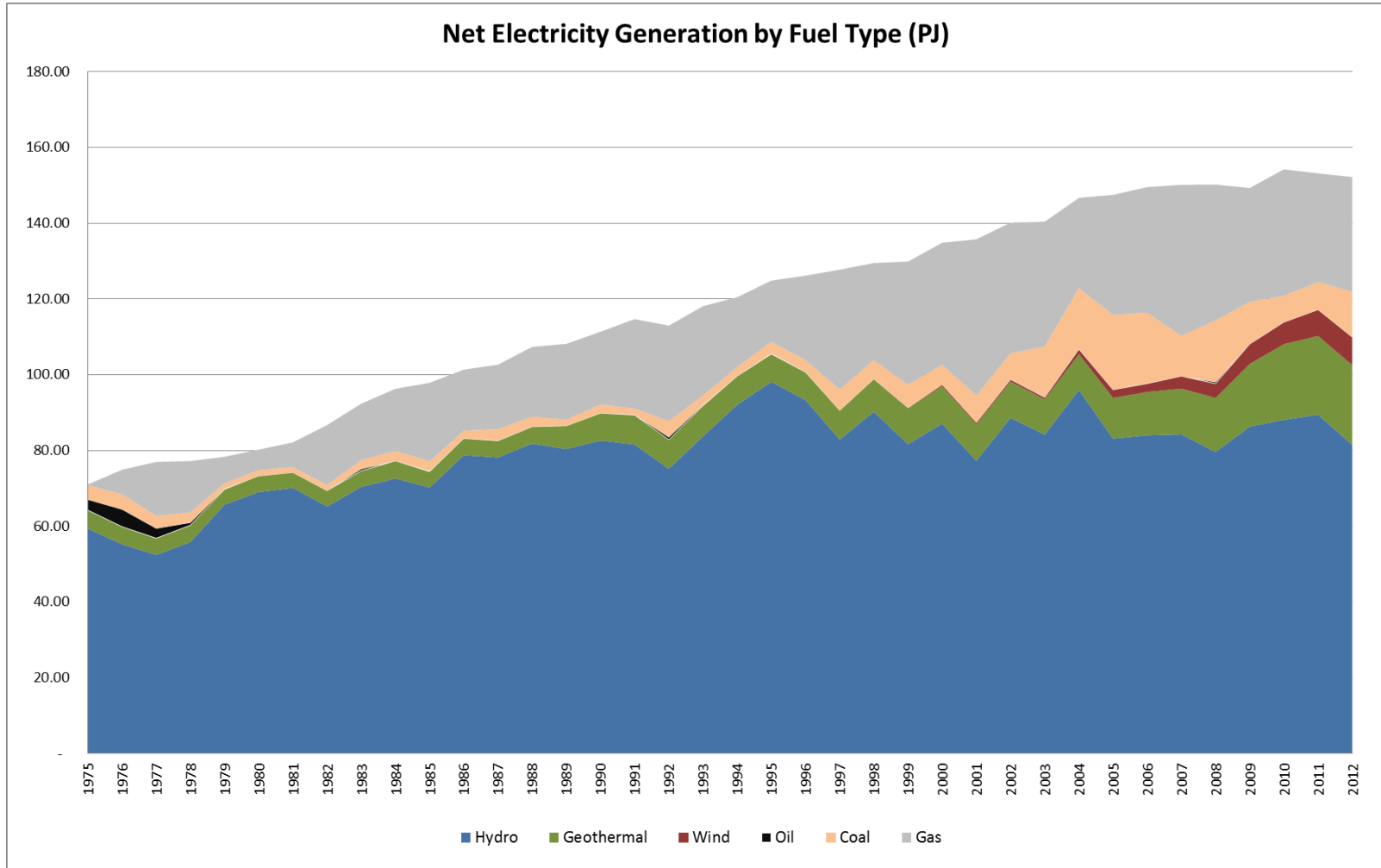
- Newsletter 6 recently distributed to CHWF Community
- Implement first aspects of resource consents
 - Establish Community Liaison Group
- Continue wind monitoring on site

Key wind monitoring facts 2012 - 2013

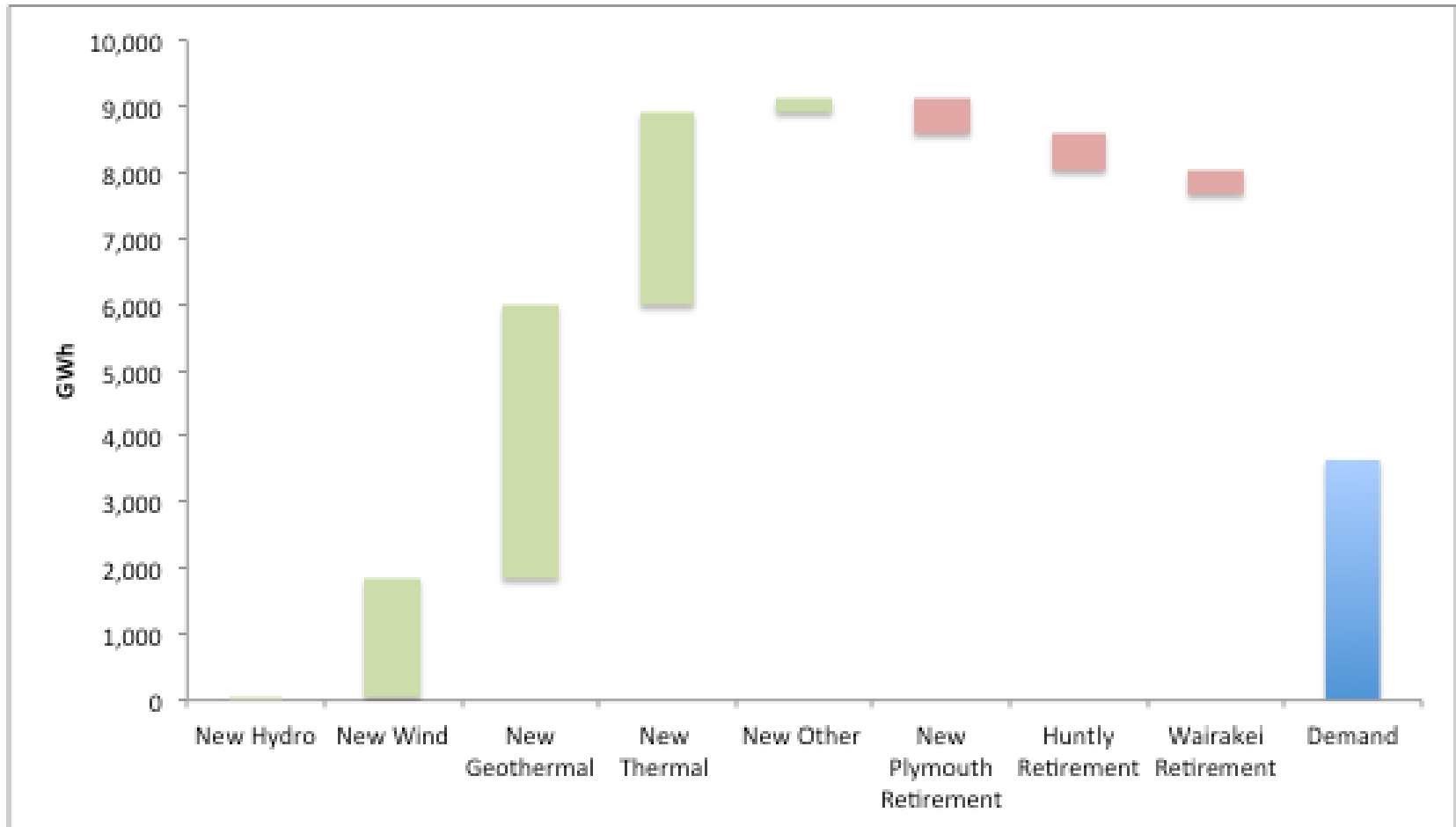
Wind monitoring continues to show that the CHWF site is still a very good wind resource

- Most common wind direction: 50% of time northwest
- Strongest wind gust to occur was 134km/hr – 3pm 8 September 2012 – major storm across NZ
- Windest month for period: October 2012 and followed by July 2013
- Least windest month August 2013
- Overall average wind speed for the period was relatively the same as long term average measured across site

Generation Mix Change



Generation Over Supply



1. Welcome – Greg Carlyon
2. Karakia – Ra Smith, Ngati Kahungunu ki Wairarapa
3. Introductions – Grey Carlyon
4. Apologies – Greg Carlyon
5. CHWF Project Update – Stephanie Murphy
6. CHWF Community Liaison Group terms of reference – Greg Carlyon
7. Any other business
8. Agreement on actions / outcomes & close of meeting – Greg Carlyon
9. Supper – provided by Alfredton School PTA

Community Liaison Group

The CLG will be one of several forums that Genesis Energy will use to consult with the CHWF Community before, during and after the construction the CHWF

- Purpose of the CLG is to:
 - Encourage community engagement
 - Develop terms of reference
 - Provide regular updates on implementation
 - Facilitate consultation in developing EMP's and CTMP
 - Determine appropriate cultural ceremonies

Community Liaison Group

Determine appropriate
frequency of CLG meetings

- Frequency of Meetings
 - Annually until construction commences or when approval is sought for the external transmission line
 - Once every 6 months from when decision made to proceed till construction commences
 - Once every 3 months during construction
 - Annually when operational
 - During decommissioning

1. Welcome – Greg Carlyon
2. Karakia – Ra Smith, Ngati Kahungunu ki Wairarapa
3. Introductions – Grey Carlyon
4. Apologies – Greg Carlyon
5. CHWF Project Update – Stephanie Murphy
6. CHWF Community Liaison Group terms of reference – Greg Carlyon
7. **Any other business**
8. Agreement on actions / outcomes & close of meeting – Greg Carlyon
9. Supper – provided by Alfredton School PTA

1. Welcome – Greg Carlyon
2. Karakia – Ra Smith, Ngati Kahungunu ki Wairarapa
3. Introductions – Grey Carlyon
4. Apologies – Greg Carlyon
5. CHWF Project Update – Stephanie Murphy
6. CHWF Community Liaison Group terms of reference – Greg Carlyon
7. Any other business
8. Agreement on actions / outcomes & close of meeting – Greg Carlyon
9. Supper – provided by Alfredton School PTA

1. Welcome – Greg Carlyon
2. Karakia – Ra Smith, Ngati Kahungunu ki Wairarapa
3. Introductions – Grey Carlyon
4. Apologies – Greg Carlyon
5. CHWF Project Update – Stephanie Murphy
6. CHWF Community Liaison Group terms of reference – Greg Carlyon
7. Any other business
8. Agreement on actions / outcomes & close of meeting – Greg Carlyon
9. Supper – provided by Alfredton School PTA

Thank you